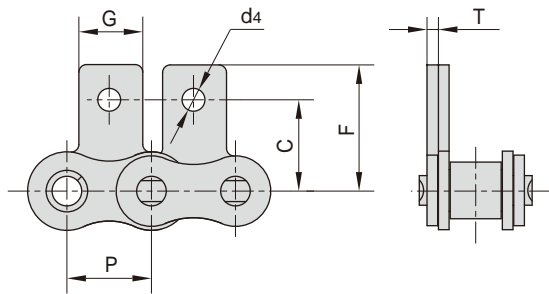


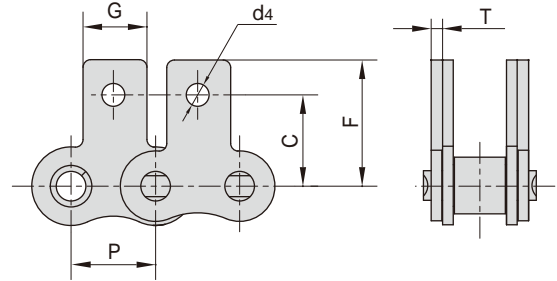
东华链号 Donghua Chain No.	P	G	F	W	T	h4	d4
	mm	mm	mm	mm	mm	mm	mm
06CSS	9.525	7.90	19.00	28.60	1.30	6.35	3.40
08ASS	12.700	9.50	25.40	35.20	1.50	7.90	3.40
10ASS	15.875	12.70	31.75	46.20	2.03	10.30	5.50
12ASS	19.050	15.90	38.10	55.60	2.42	11.90	5.50
16ASS	25.400	19.10	50.80	64.80	3.25	15.90	6.80
20ASS	31.750	25.40	63.50	89.80	4.00	19.80	9.20
24ASS	38.100	28.60	76.20	108.50	4.80	23.00	9.80
28ASS	44.450	34.90	88.90	123.00	5.60	28.60	11.40
32ASS	50.800	38.10	101.60	142.80	6.40	31.75	13.10
#06BSS	9.525	8.00	19.04	27.00	1.30	6.50	3.50
08BSS	12.700	9.50	25.40	36.40	1.60	8.90	4.50
10BSS	15.875	14.30	31.75	44.60	1.70	10.31	5.30
12BSS	19.050	16.00	38.10	52.40	1.85	13.46	6.40
16BSS	25.400	19.10	50.80	72.60	3.10	15.88	6.40
20BSS	31.750	35.00	63.50	100.50	3.50	19.80	9.00
24BSS	38.100	30.00	76.20	108.40	4.80	26.67	10.50
28BSS	44.450	35.00	88.90	123.00	6.00	28.58	13.10
32BSS	50.800	38.10	101.60	142.80	6.00	31.75	13.10

#直链板  
#Straight side plates

SA1/M1单侧(one side)



SK1/M1双侧(both sides)



东华链号 Donghua Chain No.	P	G	C	F	T	d4
	mm	mm	mm	mm	mm	mm
06CSS	9.525	7.90	9.50	14.55		
08ASS	12.700	9.50	12.70	19.05.050q	@ r8&v   R(!	48&v   R(!
10ASS	15.875	12.70	15.90			
12ASS	19.050	15.90	18.30	6.58.3n103005035	H 4 6.	
16ASS	25.400	19.10	24.60			
20ASS	31.750	25.40	31.80			
24ASS	38.100	28.60	36.50			
28ASS	44.450	34.90	44.50			
32ASS	50.800	38.10	50.80			
#06BSS	9.525	8.00	9.52			
08BSS	12.700	9.50	13.35			
10BSS	15.875	14.30	16.50			
12BSS	19.050	16.00	21.45			
16BSS	25.400	19.10	23.15			
20BSS	31.750	35.00	30.50			
24BSS	38.100	30.00	36.00			



